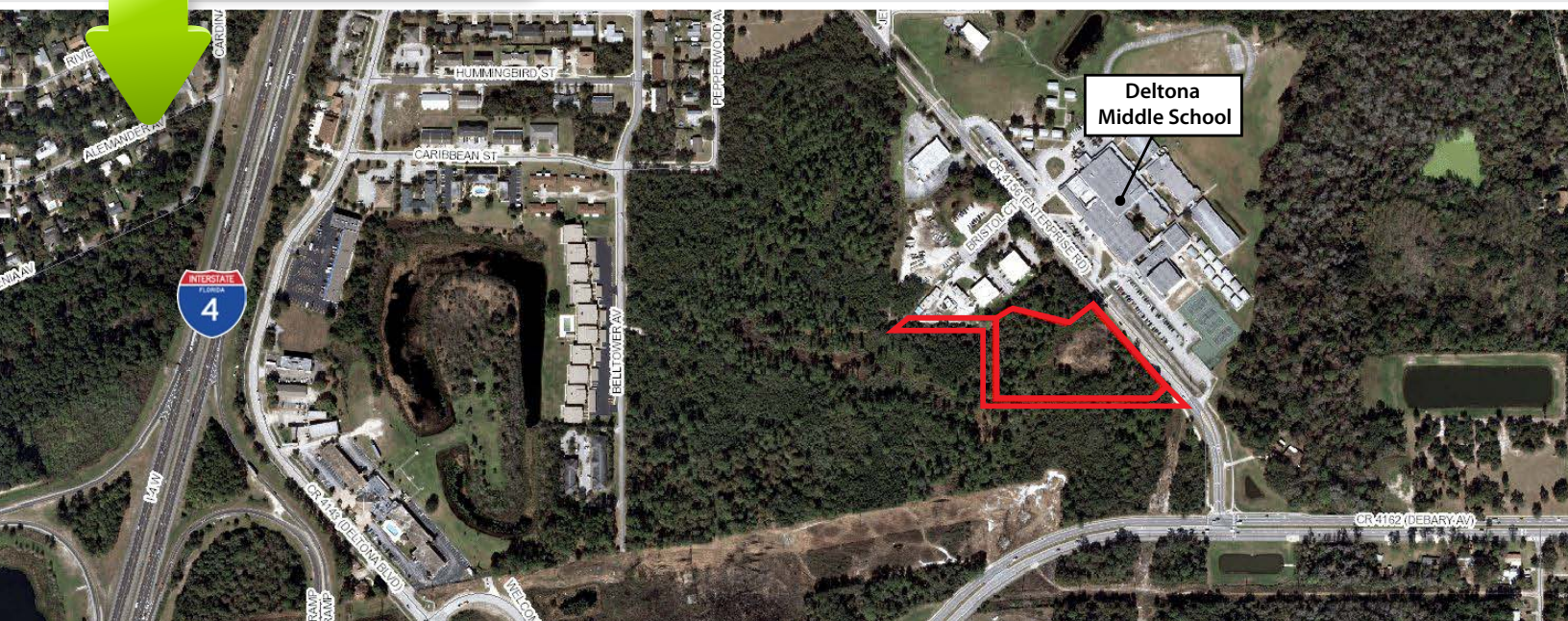


FOR SALE

Vacant Commercial Land in Deltona

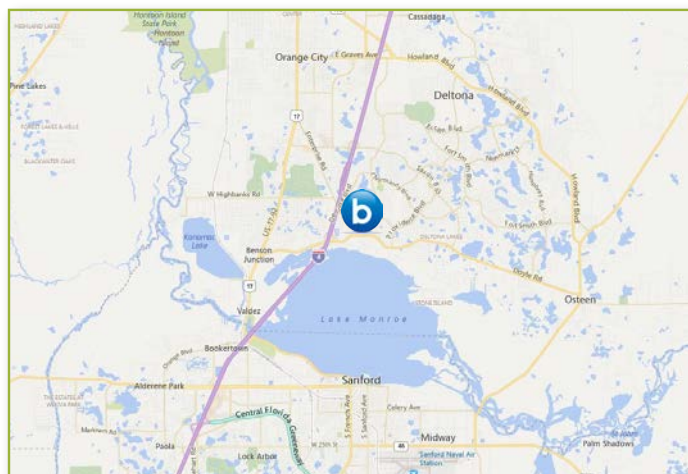


LESS THAN 1.5 MILES FROM INTERSTATE 4!

This tract of vacant industrial land is located just a mile and a half from I-4. Zoning permits a building-to-land ratio of 40% and includes such uses as retail, service establishment and professional office. Primary uses include warehousing, manufacturing, automobile, camping trailer and/or boat sales. Sale includes two parcels: 3.62 acres zoned industrial and 1.6 acres zoned wasteland, intended to separate industrial developments from potential residential developments.

PROPERTY DETAILS

- >> Sale Price: \$349,900.00
- >> Parcel ID: 8130-46-00-0061 & 8130-46-00-0071
- >> Land Size: 5.22 Acres
- >> Zoning: Industrial
- >> Frontage: 500' on Enterprise Road



CHRIS NEWMAN, ESQ.:
(407) 734.7209 | chris@bishopbeale.com

SCOTT WILLIAMSON:
(407) 734.7261 | scott@bishopbeale.com

This offer is subject to errors, omissions, prior sale or withdrawal without notice.