

FOR LEASE

Built-out Office Space on Highway 441

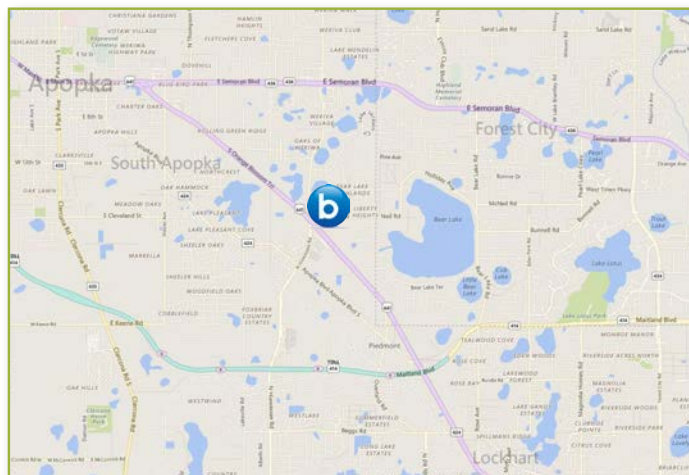


PROFESSIONAL OFFICE IN US 441 BUSINESS DISTRICT!

The Hanlex Building is located off the heavily traveled US Highway 441, with exposure to over 28,500 cars per day. The location offers excellent visibility and easy access with close proximity to the Maitland extension, SR 436 & Claracona Ocoee Road. The building is ideal for a corporate office, medical, governmental or architect tenant. Tenant Improvement allowance is available for a qualified tenant.

PROPERTY DETAILS

- >> Lease Rate: \$22.00 / SF Modified Gross
- >> Available SF: 8,000 SF
- >> Building Size: 19,020 SF
- >> Zoning: PO/I
- >> Parking: 4.6/1,000 Spaces
- >> Signage: Facade & Monument
- >> Traffic Count: 28,500 AADT - Highway 441



JEAN-PAUL BEAULIEU, CCIM, CLS:
(407) 734.7201 | jp@bishopbeale.com

JILL ROSE:
(407) 734.7204 | jill@bishopbeale.com

This offer is subject to errors, omissions, prior sale or withdrawal without notice.



Floor Plan

