

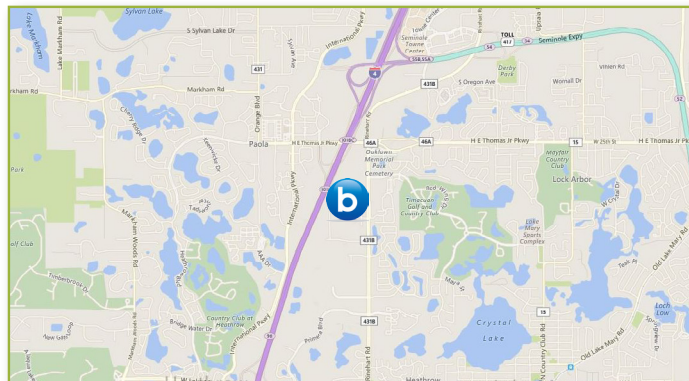
**FOR SALE****Lake Mary Professional / Medical Office**

## LAYOUT OFFERS SINGLE OR MULTI-TENANT USE!

The 4,902 SF professional / medical office is located in Stirling Center Office Park, an office park with multiple medical and professional office tenants. The layout includes a dividing wall that can be used to split the space into two separate suites; one at 1,056 SF and the other at 3,846 SF. Ideally, a buyer could use the bigger space and rent out the smaller side or vice versa. Layout features multiple private offices, conference rooms, open work areas, break room and restrooms. Stirling Center Office Park is conveniently located in beautiful Lake Mary/Heathrow directly off Rinehart Road. Location provides easy access to I-4, SR 417, CR 46A, and Lake Mary Boulevard. In addition, the property is less than one mile south of the newly opened Florida Hospital Lake Mary ER.

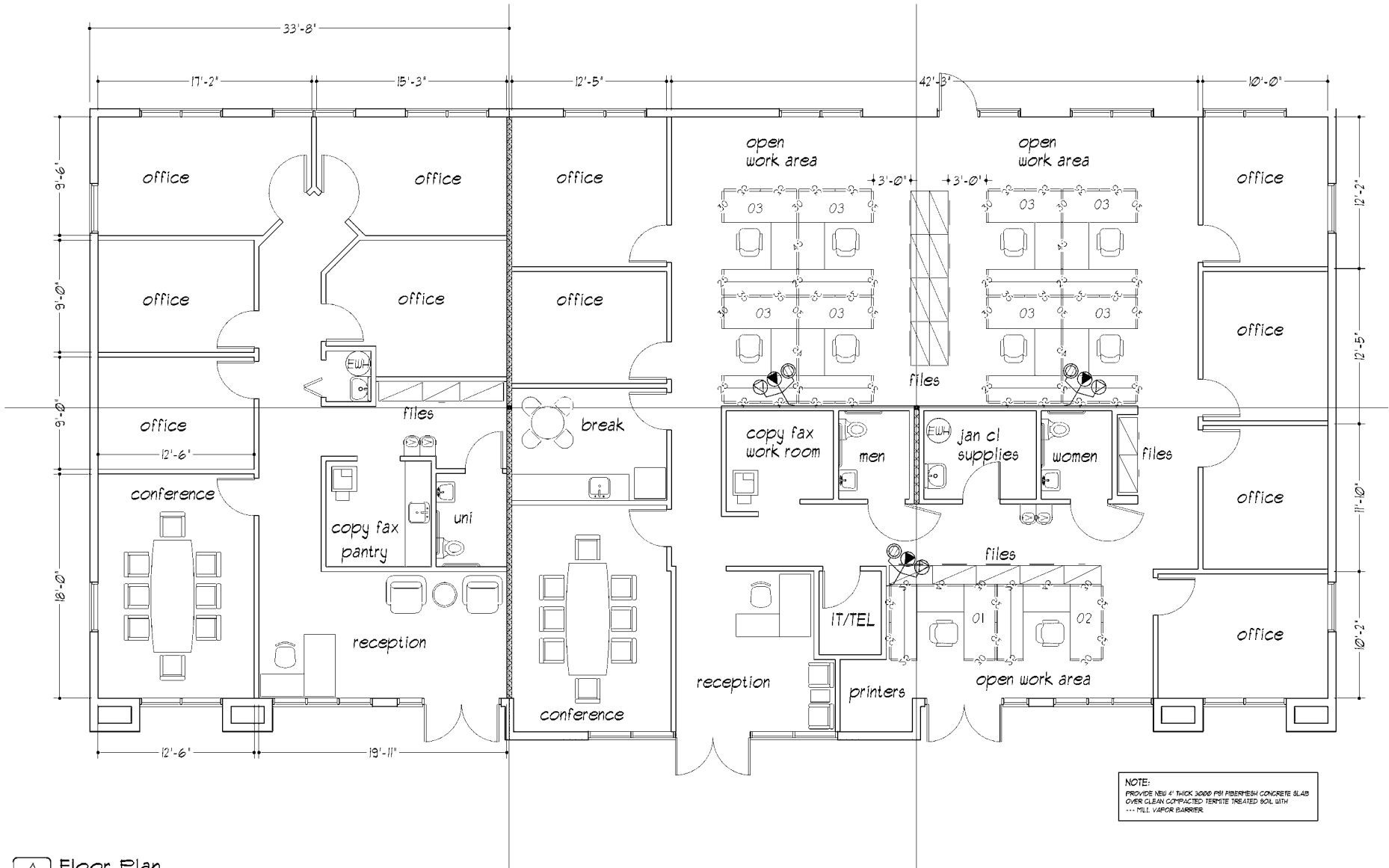
## PROPERTY DETAILS

- >> Sale Price: \$950,000.00
- >> Total Building: 4,902 SF
- >> Zoning: M-1A
- >> Year Built: 2006
- >> Signage: Building

**SCOTT WILLIAMSON:**(407) 734.7261 | [scott@bishopbeale.com](mailto:scott@bishopbeale.com)*This offer is subject to errors, omissions, prior sale or withdrawal without notice.*



# Floor Plan



**NOTE:**  
 PROVIDE NEW 4\"/>

**△ Floor Plan**  
 △-1 SCALE: 1/4\"/>